

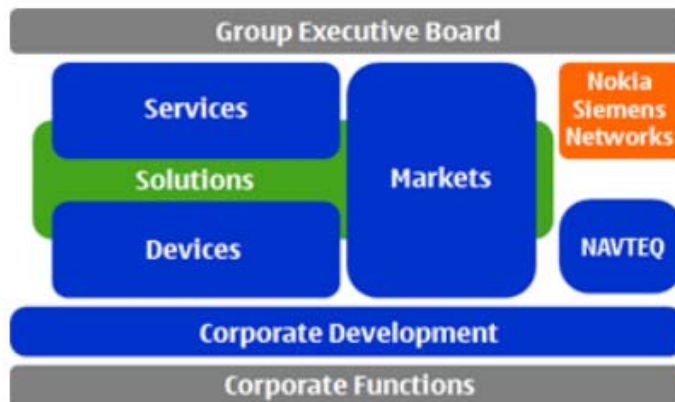
Nokia in brief

At Nokia, we are committed to connecting people. We combine advanced technology with personalized services that enable people to stay close to what matters to them. Every day, more than 1.2 billion people connect to one another with a Nokia device – from mobile phones to advanced smartphones and high-performance mobile computers. Today, Nokia is integrating its devices with innovative services through Ovi (www.ovi.com), including music, maps, apps, email and more. Nokia's NAVTEQ is a leader in comprehensive digital mapping and navigation services, while Nokia Siemens Networks provides equipment, services and solutions for communications networks globally.

2009 facts and figures

- Head office in Finland; R&D, production, sales, marketing activities around the world
- World's #1 manufacturer of mobile devices
- Mobile device volumes 432 million units
- Reported net sales EUR 41.0 billion
- Reported operating profit EUR 1.2 billion
- 123 553 employees at year end (including Nokia Siemens Networks)
- Strong R&D presence in 16 countries
- R&D investment EUR 5.9 billion
- 37 020 employees in R&D (approximately 30% of workforce, including Nokia Siemens Networks)
- Sales in over 160 countries

Nokia organization



- *Devices* is responsible for developing and managing our portfolio of mobile devices, which we make for all major consumer segments.
- *Services* designs and develops Internet services that enrich the experience people have with their mobile devices and the web. Messaging, music, maps, media as well as Ovi developer tools are key focus areas as we continue to expand our services offering to consumers and create opportunities for developers and content providers.
- *Solutions* is responsible for driving Nokia's offering of solutions, where the mobile device, personalized services and content are integrated into a unique and compelling package for the consumer. The unit is tasked with conceiving and creating such solutions.
- *Markets* manages our supply chains, sales channels, brand and marketing activities and is responsible for delivering our devices, services and solutions to the consumer.
- *Corporate Development* provides operational support to *Devices*, *Services*, *Solutions* and *Markets*, and is also responsible for exploring corporate strategic and future growth opportunities.
- *Nokia Siemens Networks* provides wireless and fixed network infrastructure, communications and networks service platforms, as well as professional services to operators and service providers.
- *NAVTEQ* is a leading provider of comprehensive digital map data for automotive navigation systems, mobile navigation devices, Internet-based mapping applications, and government and business solutions. NAVTEQ's map data will be an important part of the Nokia Maps service that brings downloadable maps, voice-guided navigation and other context-aware web services to people's pockets.