



Health & Safety from the ground

Seane Strickland, Health and Safety Inspector, Nokia

Christopher Nell, Team Leader, DCN

Nokia has designed a set of life-saving rules related to working at height, road safety and electrical work. Nokia has a zero-tolerance policy for not following these rules.

To help us understand the perspective of one of the people working on a deployment site, Nokia Health and Safety Inspector Seane Strickland chats with Christopher Nell, a Team Leader from our supplier DCN. The interview took place in South Africa.

Seane and Christopher are discussing working at height, Nokia’s life-saving rules and the impact they have had on Christopher both personally and professionally.

Road Safety



Always wear a seatbelt in ANY vehicle. Required for everyone in the vehicle.



Do not drive distracted or tired. Take a break every two hours.



Always drive at a safe speed for road, traffic & weather conditions.

Working at Height



Always attach yourself and your equipment.



Always make sure that nobody enters the space below.

Electrical Safety



Do not work on any electrical system unless you are trained.

Seane: Chris, you mentioned using an AI machine-learning app to complete your risk assessments. How does that work?

Christopher: The AI app helps us identify hazards on site. It has safety control measures and also helps us save time on site.

Seane: Can you give us an example of how Nokia's life-saving rules have made a difference in your work?

Christopher: One of Nokia's life-saving rules is: 'Always attach yourself'. Last year, we had an incident on the tower. We were working at a height of 25 meters. One of the guys was climbing and he was going to work on the tower, but then he touched a brace and it gave away. He slipped but didn't fall, so I can say that the life-saving rules saved his life. He went safely home at the end of the day.

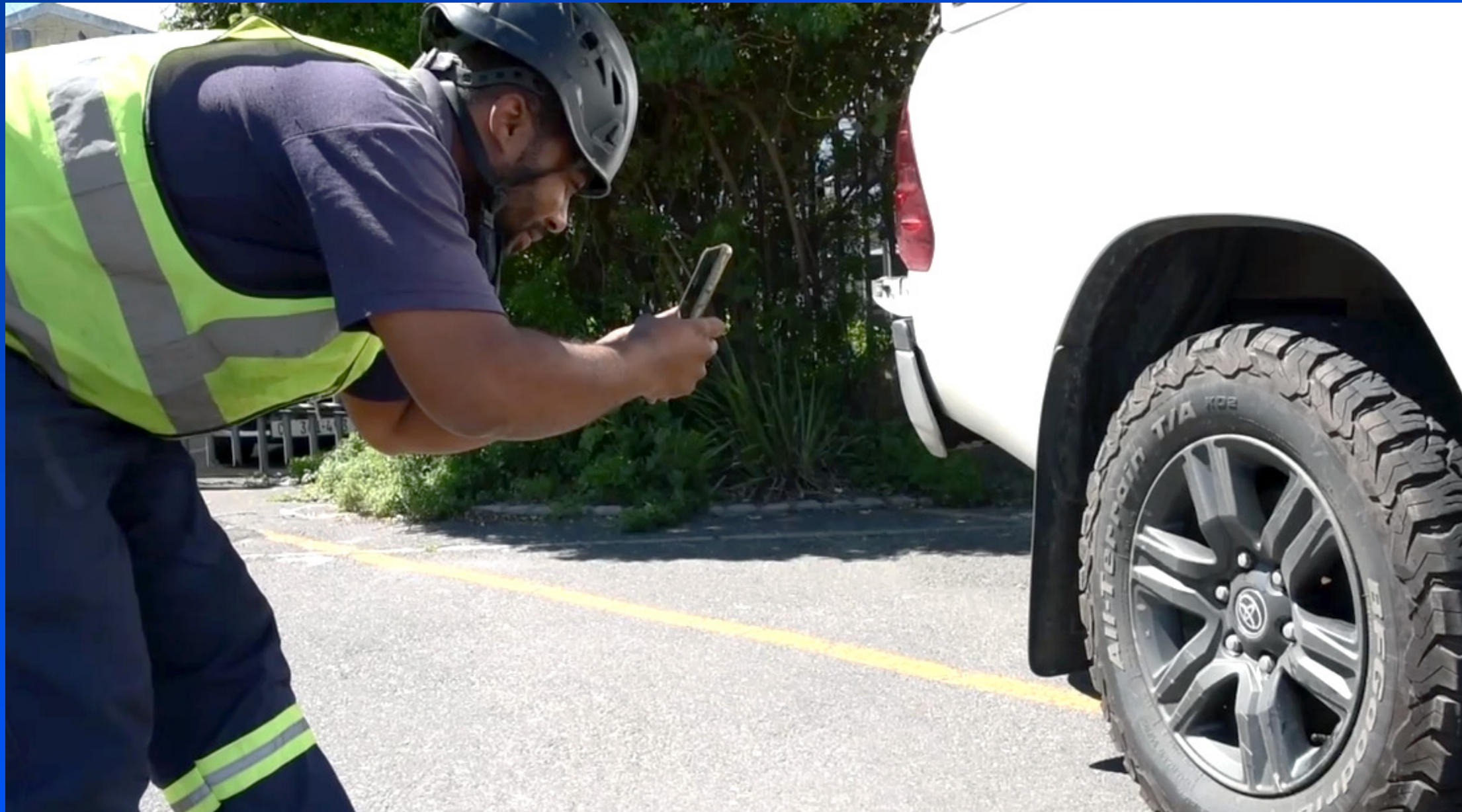
Seane: Has Nokia's focus on safety affected how you view safety in your personal life?

Christopher: Yes Seane, what I think of mostly is the safety belts when driving. I also remind my family to always put on safety belts. As for myself, I really want to state that I always keep to the speed limit.

Seane: Thank you for joining us today. And be safe.



The AI/ML capabilities of Nokia's digital delivery platform check the tire profiles before each drive to ensure they are in good condition.



Nokia OYJ
Karakaari 7
02610 Espoo
Finland

Tel. +358 (0) 10 44 88 000

CID:213668

nokia.com



About Nokia

At Nokia, we create technology that helps the world act together.

As a B2B technology innovation leader, we are pioneering networks that sense, think and act by leveraging our work across mobile, fixed and cloud networks. In addition, we create value with intellectual property and long-term research, led by the award-winning Nokia Bell Labs.

Service providers, enterprises and partners worldwide trust Nokia to deliver secure, reliable and sustainable networks today – and work with us to create the digital services and applications of the future.

Nokia is a registered trademark of Nokia Corporation. Other product and company names mentioned herein may be trademarks or trade names of their respective owners.