



W@H and R&L – Key Focus Areas

NOKIA

where everyone goes home safely at the end of the day

# Agenda

- 01 Working at Height – An overview
- 02 Working at Height – Key risk area – Refresher
- 03 Our Non-Negotiables – Focus areas
- 04 Going Home Safely at the end of the day

[Andrew.eadie@nokia.com](mailto:Andrew.eadie@nokia.com)

Topic	Date	time
Working at Height	1st Sept	10 am EET
		04 pm EET
Life Saving Rules	8th Sept	10 am EET
		04 pm EET
Underground Asset Avoidance & Street Works	15th Sept	10 am EET
		04 pm EET
Electrical Safety	22nd Sept	10 am EET
		04 pm EET
Wellbeing	29th Sept	10 am EET
		04 pm EET
Casual Workers and Modern Slavery	6th Oct	10 am EET
		04 pm EET
Environment	13th Oct	10 am EET
		04 pm EET
Road Safety	20th Oct	10 am EET
		04 pm EET

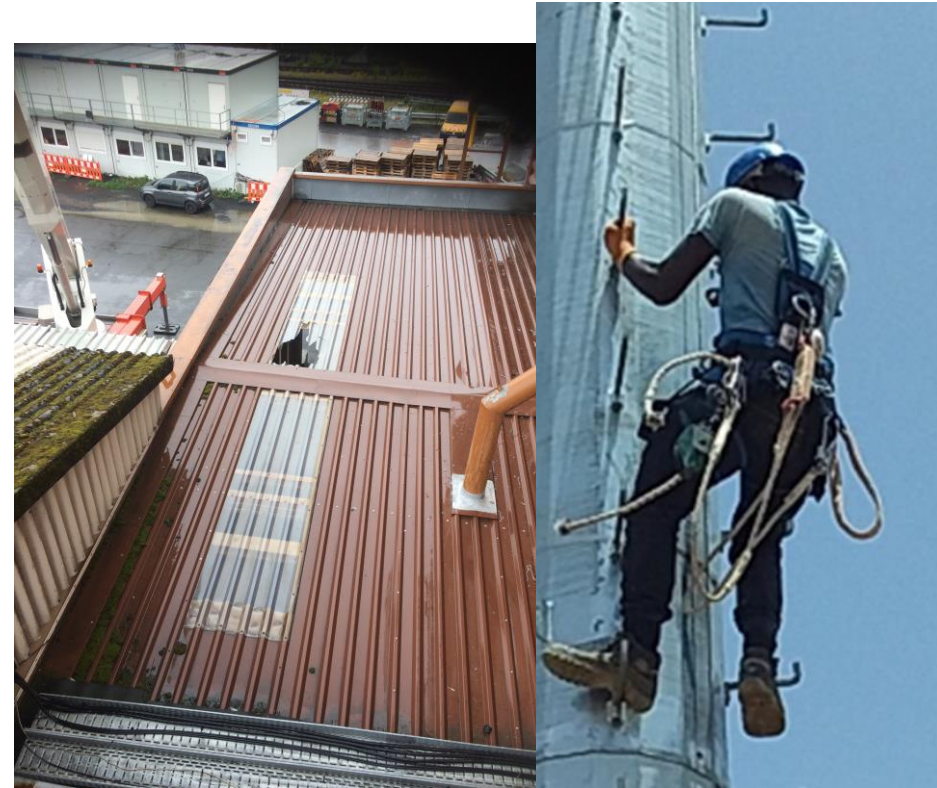


Not everyone has gone home safely  
These factors are impacting behaviour

2019



2020



# High Risk Areas, narrow risk profile

Controls are well understood, lets make sure behaviour follows



## Working at Height

Majority were working at height incidents.



## Rigging and Lifting

There was an increase on rigging and lifting incidents.



## Road Safety

Followed by vehicles incidents.



## Street Works

There was an increase on street works incidents.



## Electrical

And electrical incidents.



## Underground Works

And underground assets incidents.

Non-negotiables

Planning

Supervision

Behaviour

# FASTEN

F – Fit to Work

A – Arrangements

S – Supervision

T – Training

E – Equipment

N – Non Negotiable

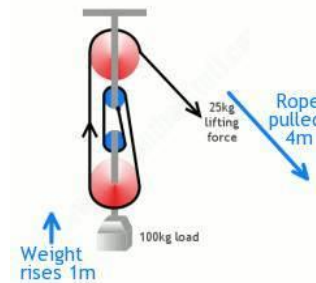
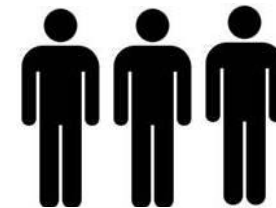
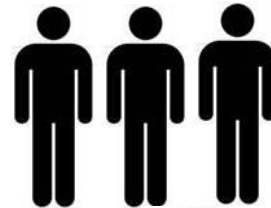
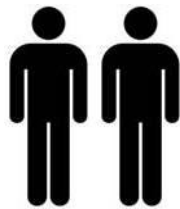
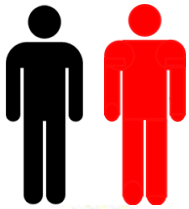
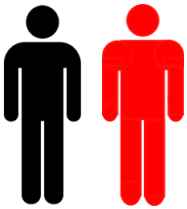
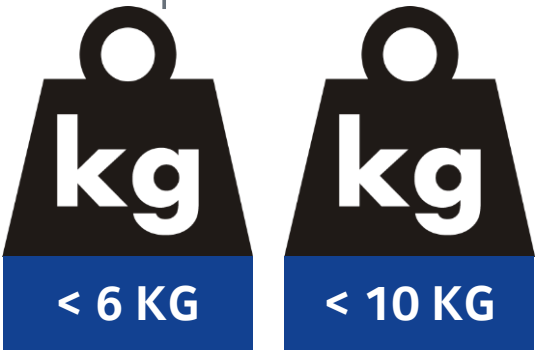
We get FASTEN  
right far more than  
we get it wrong





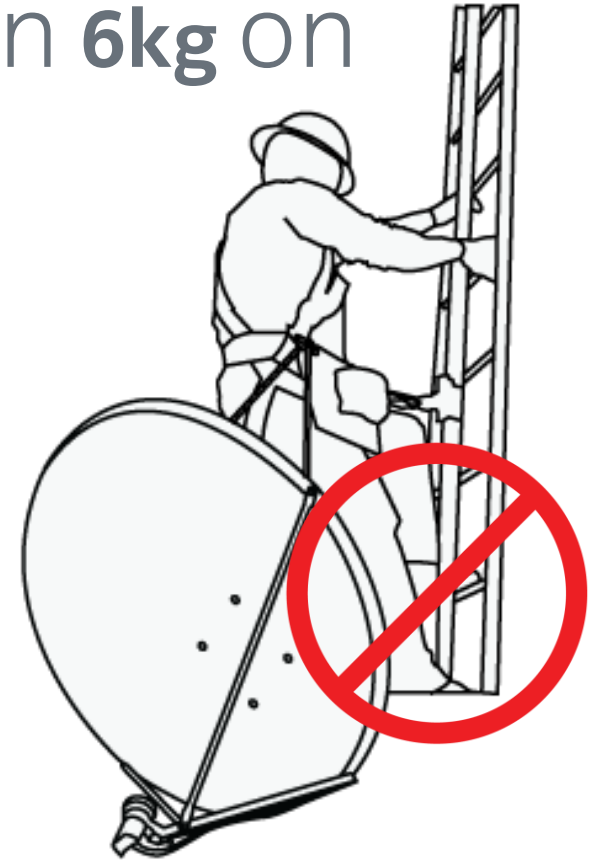
# Working at Height Standard

## In Simple Terms

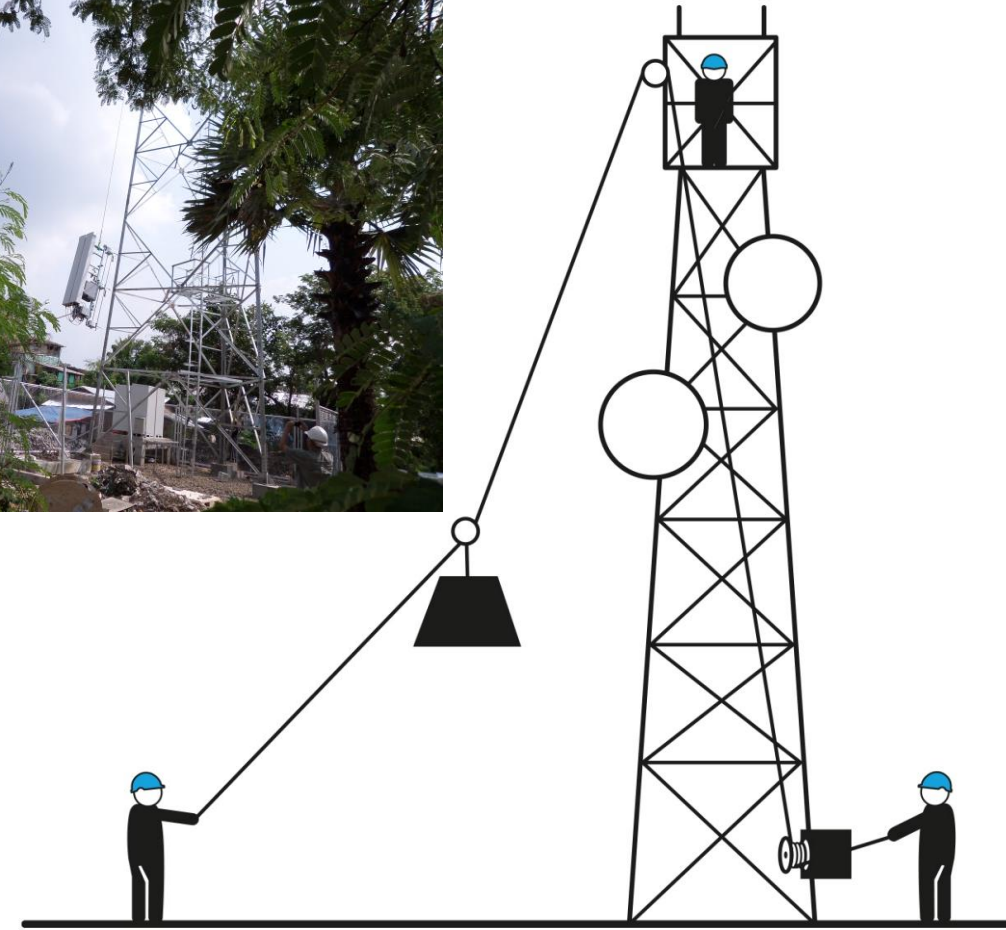


## Our Non-Negotiables

- Do **not** climb with loads heavier than **6kg** on harness
- Do not work at height at night
- Always be FASTENed



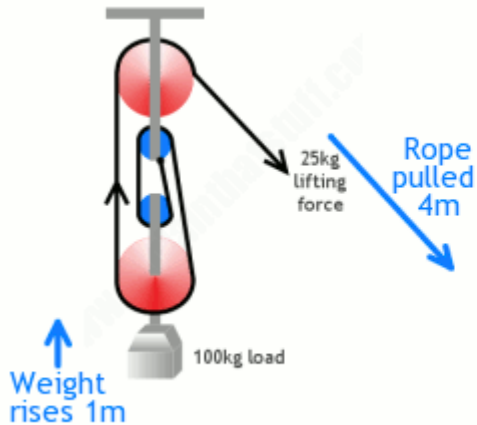
R&L is technical, it can also be complicated  
We can still make it simple





# Rigging and Lifting

## In Simple Terms

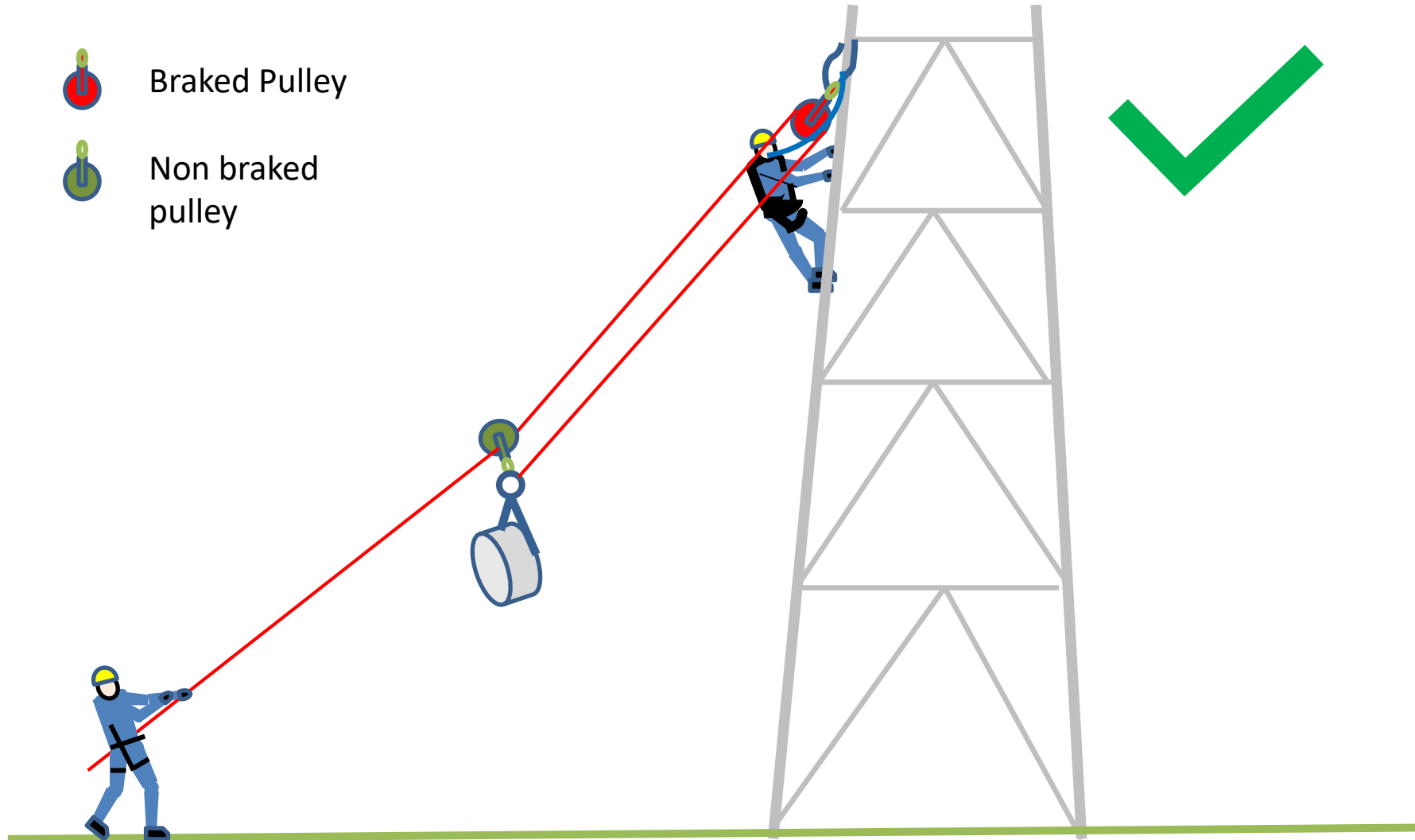


Rigging is the process of using a combination of pulleys, connectors and mechanical devices to assist in lifting heavy objects

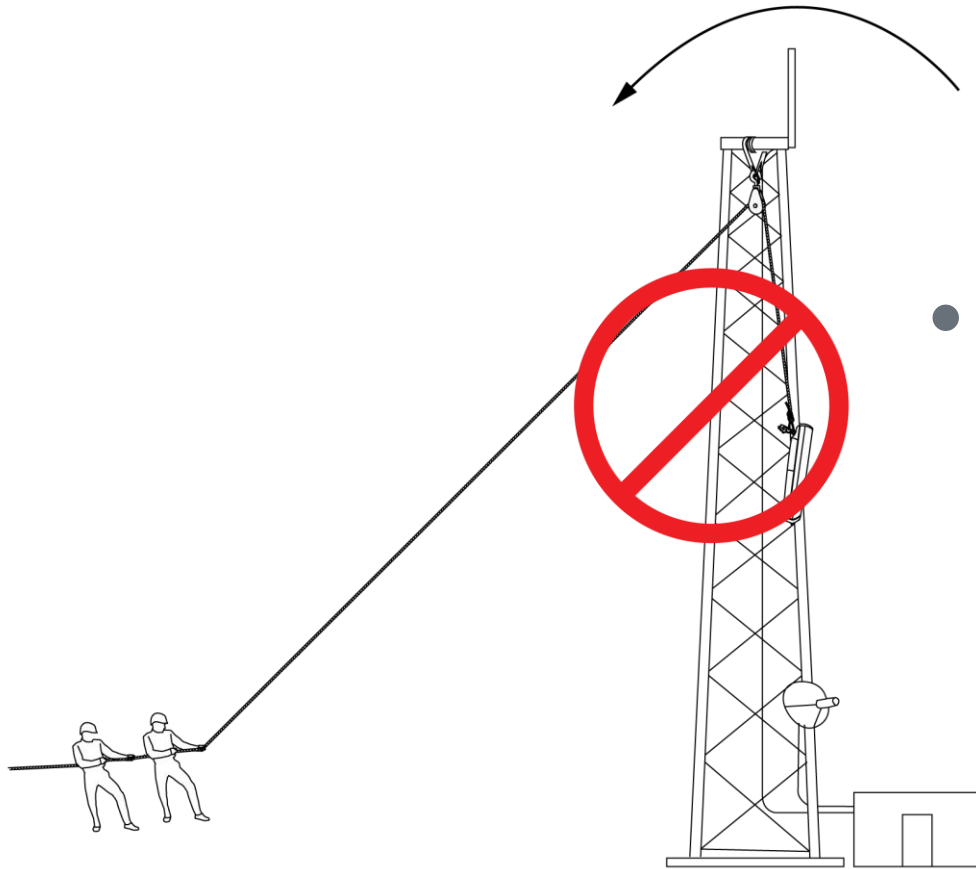
### Basic Principles

- Equipment will provide a mechanical advantage
- Equipment must have a means to stop the item returning when the rope is released
- For heavy items this requires a minimum of a three man team.
  - 1 at the top that secures the top pulley and positions the equipment
  - 1 at the bottom operating the winch to lift the equipment
  - 1 holding a guide rope to prevent the load from swinging and being damaged
- The team on the ground should be positioned out of the fall zone
- The team leader must be able to assess the anchor points and be able to provide direction to the team

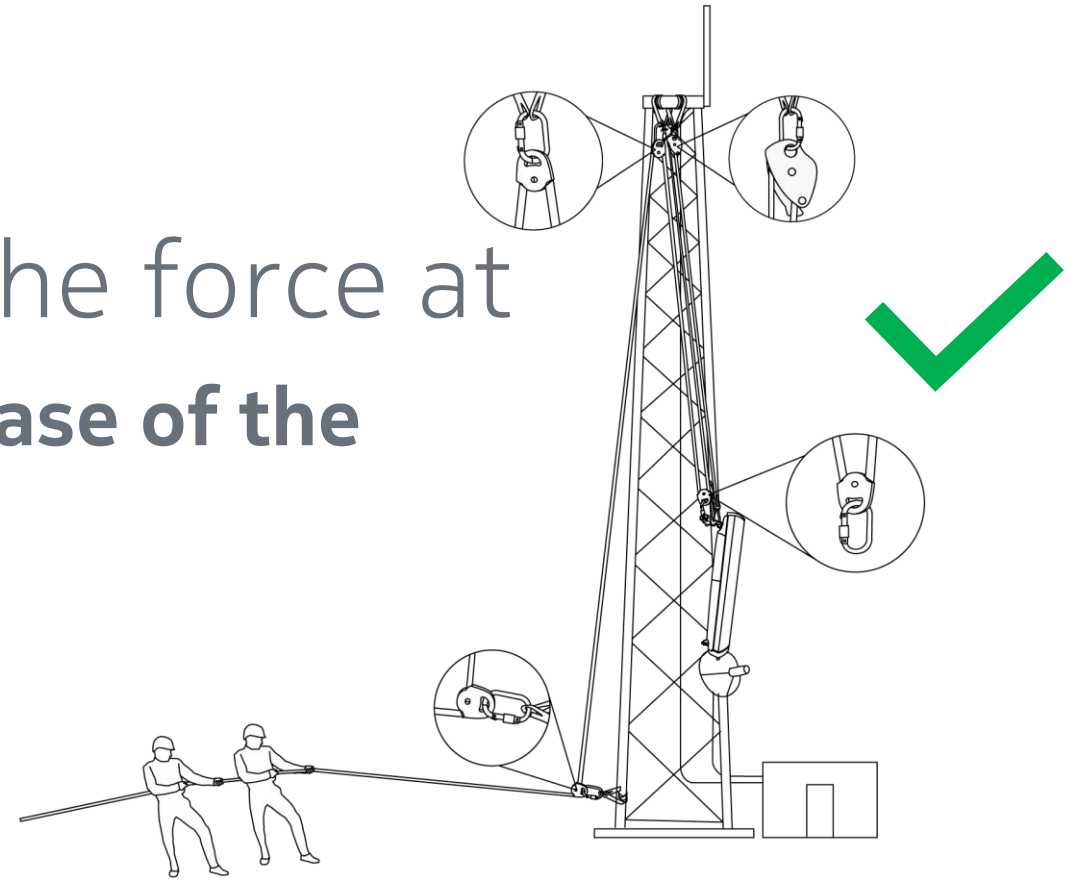
# Typical 2 man Lift



# Good Practice and Techniques - Rigging



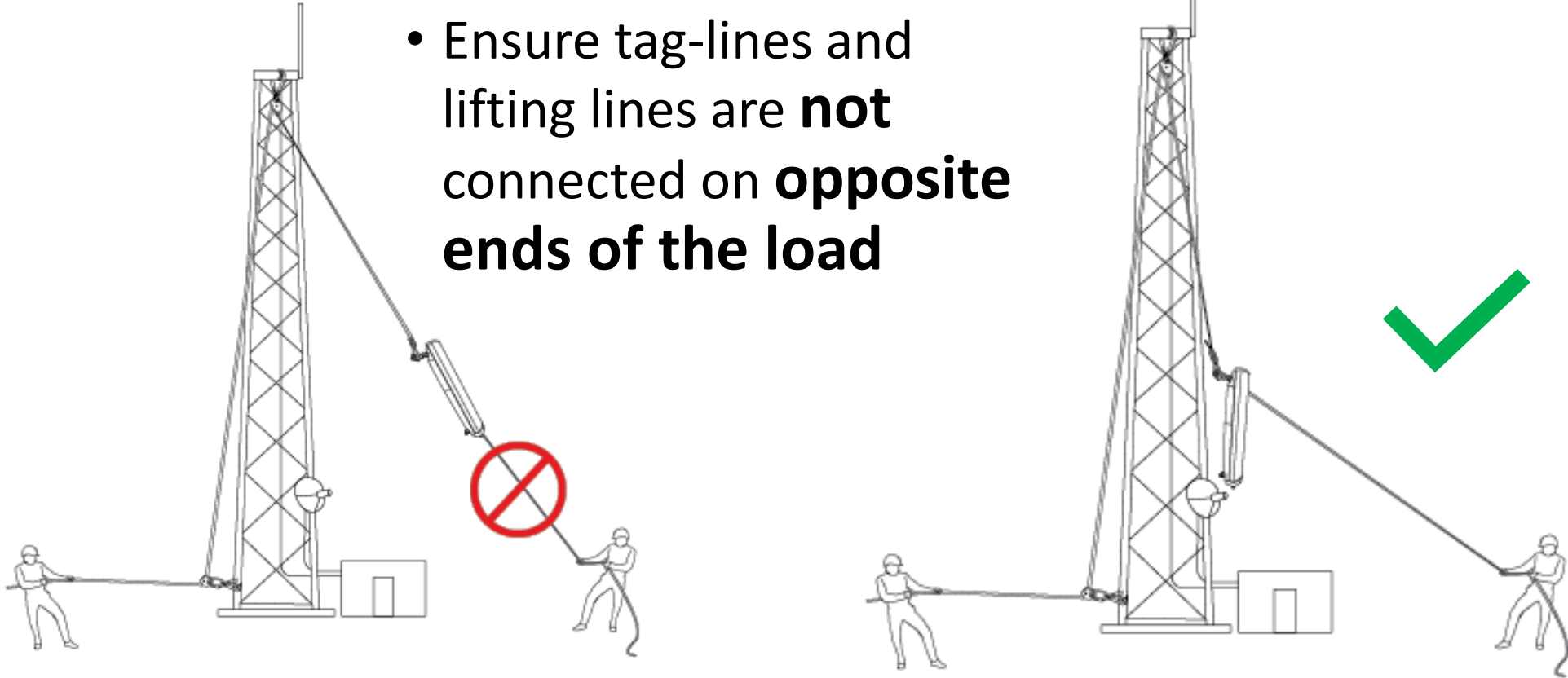
- Pull the force at the **base of the tower**





## Good Practice and Techniques - Rigging

- Ensure tag-lines and lifting lines are **not** connected on **opposite ends of the load**



# Non-Negotiables

1. Rigging and lifting will only be awarded to competent suppliers
  - Defined requirements and consistent evaluation in approval process
  - Dynamic and up to date supplier list
2. Nokia will provide accurate information related to the :-
  - Equipment weights, dimensions and characteristics
  - Configuration and site information
3. All lifts will be planned and lifts will be executed according to that plan
  - Minimum expectations for components of lift plan and lift categorisation
  - Verification, Acceptance and remote check processes defined
4. If the lift cannot be conducted safely using agreed plan:-
  - A Formal review of the lift plan and agreed changes must be done



# Lift Plans Arrangements

## Bill of Material (BOM)

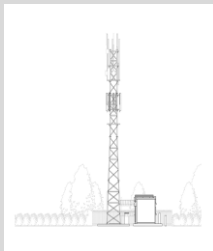
1. Antenna type and weight
2. Ancillary equipment and weight
3. Supporting brackets and connectors weight



**Provided by  
Nokia**

## Site Information & Design

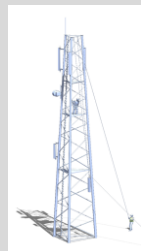
1. Type and height
2. Location of equipment
3. Ground conditions and space



**Provided  
from  
Customer**

## Lift Method Options based on

1. Weights and site information
2. Equipment configuration
3. Existing equipment



**Options  
Suggested by  
Nokia**



## Lift Plan

1. Weights and equipment configurations
2. Site design and location characteristics
3. Options and limitations defined by Nokia
4. Available skills and equipment
5. Time and weather restrictions
6. Assessment of risks and “reality” vs centrally held information



**Developed by  
Supplier who  
is completing  
the lift**



# Summary

Think about, talk about and demonstrate good behaviour



## Standards

- Working at Height
- Rigging & Lifting



## Non-Negotiables

- FASTEN
- Lift Plan
- Supervision



## Getting it Right

- We get it right more than we get it wrong
- We need to remind each other why the non-negotiables are in place
- We need to respect each other and look out for each other
- We need to consider the impact COVID-19 has on how we think





# Questions & Answers

# NOKIA

where everyone goes home safely at the end of the day